



# COMMUNITY NEWS

Mid-June 2011

*This community newsletter is sent out on the first and third Wednesdays of each month (or thereabouts) on behalf of tawalink.com, Tawa's community website since 2002.*

## ANOTHER SUCCESSFUL 'FORMAL' FOR TAWA COLLEGE

There has been some negative publicity recently regarding school balls. That's what gets into the news. You won't read about the recently-held Tawa College ball on the front page of the newspaper because it's a "good news" story. Most of the students look forward to it months in advance and almost all have a great time without the excesses you'll hear about in the news! Long may it continue that way.



The following report about the Tawa College ball which took place at the Wellington Town Hall on Saturday 11th June has been supplied by the principal, Murray Lucas:

"The Tawa College Formal was superb and the students need to be congratulated for their excellent behaviour, presentation and appearance. The Mayor of Wellington twice congratulated the school on how well the Formal was going. She was attending a function adjacent to the Wellington Town Hall, the venue of the Formal.

The occasion was successful as all Year 12 students had been involved in formal dancing lessons, with the same opportunity having been given to Year 13 students last year. No student failed the breathalyser, and the inclusiveness on the night was excellent. The support of parents and caregivers from the Tawa community is hugely appreciated."

## GERMAN YOUTH CHOIR IN TAWA NEXT WEEK

The renowned German Youth Choir "Christophorus Kantorei Altensteig" is touring New Zealand this month and is giving a concert at Tawa College Hall on Monday 20th June at 7.30pm. The choir is being co-hosted by St Christopher's Anglican Church and Tawa College.

The "Christophorus Kantorei Altensteig" is a well known school choir in Germany and carries the title "Best German Youth Choir" after winning the prestigious German choir olympics last year. Each year the choir undertakes a two week European tour and every four years an international tour with the goal of sharing their music in churches, schools and choirs and getting to know a country especially through its people.

The choir is touring New Zealand from 11th-29th June with 41 girls and 19 boys, grades 8-13, and 6 accompanying adults.

The concert programme (approx 1½ hours) is a mix of "spiritual and secular" music. Language-wise: 40% English, 40% German, 20% other.



For further info, see the official website: [http://www.christophorus-kantorei.de/en/index\\_en.html](http://www.christophorus-kantorei.de/en/index_en.html)

## SPRING INTO TAWA MARKET DAY

It's happening on Saturday 10th September. We'll be sending out information later this month. Contact us if you haven't previously been involved and want to be this time.

## FAULTY STREET LIGHTS?

If you ever notice street lights that aren't working, give the Council a call on 499 4444. Otherwise it might be a while before anyone knows about it. They're usually very helpful at the other end of the line, and the light(s) in question could be fixed within a very short space of time. When there are "complications" it has been known to take longer (as Brasenose Place residents can verify).

## NEW POLICE CONSTABLE IN TAWA

This is what we ran in December 2010:

*We have a new community constable who will be starting on the beat at the end of January. Her name is Sarah Riddering and apparently she's previously been in the military. We're looking forward to having her on board.*

However internal police procedures delayed the appointment. Now, six months down the track we've had confirmation that Sarah is rearing to go, but no starting date has yet been set. It could still be 4 or 5 weeks away. Let's just say that not everybody is happy about the situation. Surely Tawa deserves better than this!

## DEFIBRILLATORS IN TAWA

The following is from an article in "The Listener", October 30, 2010:

*Every day, cardiac arrests kill 12 New Zealanders who could be saved by an affordable, easy-to-use device.*

*Look around the next time you're at your local shopping mall. You'll see signs pointing to the nearest fire exit and the nearest fire extinguisher. There'll be signs alerting you to toilets, ramp access and all manner of other mall features. But where's the sign telling you where the nearest defibrillator is? And would you know how to use it if you did locate one?*

*Eighteen New Zealanders die every day as a result of cardiac arrests. Of those, only six are in hospital; the remaining 12 are going about their normal lives. "So 12 of those lives could potentially have been saved by a defibrillator," says Dr Harvey White. The director of coronary care at Auckland City Hospital is on a major defibrillator drive. He thinks there should be one in every major building – both public and commercial.*

*"They should be in every church, every airport, school, supermarket and shopping mall. I think they should be in every general practice, on every marae; at all sporting and other major events."*

**So what are defibrillators?** Automated external defibrillators (or AEDs) perform the heart-starting task needed when a patient suffers a cardiac arrest known as ventricular fibrillation. This occurs when the heart begins contracting uncontrollably and stops pushing blood around the body. The defibrillator delivers a controlled electric shock to the heart, which stops the spasms and allows a return to normal contractions. In adults over 90% of cardiac arrests are a result of ventricular fibrillation.

*For every minute lost after a cardiac arrest without defibrillation, the chances of survival drop by up to 10%. Only 5% of those who suffer a cardiac arrest outside a hospital survive.*

They're easy to use. Push the button and they'll actually speak to you, telling you what to do!

## WHERE ARE DEFIBRILLATORS IN TAWA LOCATED?

Tawa Volunteer Fire Brigade – more than one  
Tawa Medical Centre  
Linden Medical Centre  
Tawa Pool  
Mervyn Kemp Library  
Tawa Community Centre  
Dress-Smart

There will shortly be one more in Tawa, at a place yet to be determined, thanks to the Tawa Community Board – see the Update further down.

## **NO MOUNTAIN BIKES IN TAWA'S BUSH RESERVES - PLEASE**

Over recent months there has been a number of incidents of mountain bikes observed in the Tawa bush reserves - at Redwood Bush, Larsen Crescent and Wilf Mexted Reserves. The signage for these bush reserves includes advice to cyclists that they are prohibited in the reserves.

The tracks in our bush reserves have been designed to allow walkers to experience the bush and bird life while protecting the regenerating foliage by encouraging users to use the walkway rather than random trampling of the undergrowth. Unfortunately cyclists are less likely to keep to the track and take short cuts, want to add extra jumps and tend to cause more damage to the track surface, destroying adjacent tree saplings and surrounding undergrowth which may never naturally recover or may take many years to do so.

Please encourage the cyclists in your family or cyclist friends to utilise the BMX cycle jump track network off Duncan Street adjacent to Tawa railway station for their off road experience. There are also long cycle trails along the Hutt River and Porirua Harbour to Pukerua Bay, or if something more ambitious is required then there are extensive cycle trails through Belmont Regional Park. In the future there are likely to be more cycle trails available in the Spicer Pine Forest and the Outer Green Belt once further tracks are established in these areas.

- *Richard Herbert, Friends of Tawa Bush Reserves Inc*

To help plan your cycle excursions, also see the following suggestions:

Belmont Regional Park:

<http://www.gw.govt.nz/Mountain-biking-tracks-2/> and <http://tracks.org.nz/area/show/11>

Hutt River Trail: <http://www.gw.govt.nz/huttrivertrail/>

Cycling and Mountain Biking in Porirua: <http://www.pcc.govt.nz/Leisure/Cycling-and-Mountain-Biking>

Wellington City Recreation Guide:

<http://www.wellington.govt.nz/services/resbelt/recreation/recreation.html>

Wellington's Best Bike Rides: <http://www.kennett.co.nz/index.php/Books/WellingtonsBestBikeRides>

## **GETTING HIS HEAD SHAVED FOR CHARITY**

John Sherborne, a local man, has been persuaded to have his head shaved for charity - The Leukaemia & Blood Foundation of New Zealand. Seems like a few folks would like to see his ponytail go. Because it's such a worthy cause he has agreed, subject to people donating a sum of \$2,000 by 26 June.



See this link for more info: [http://www.shaveforacure.co.nz/view\\_event\\_profile/5351](http://www.shaveforacure.co.nz/view_event_profile/5351)  
Any contributions would be much appreciated!

## **AFS INTERCULTURAL EXCHANGE**

AFS are looking for host families for exchange students for 2 months, 6 months and full year exchanges. If you would like to find out more about bringing an exchange student into our community and your home, please contact Howard Young to discuss this exciting opportunity.

Howard can be reached on [hyoung@greenacres.school.nz](mailto:hyoung@greenacres.school.nz)

## **A TAWA PINOY**



Judy Bocacao is a Tawa Pinoy, that is a Tawa Filipino. 'Pinoy' is to the Philippines what a 'Kiwi' is to New Zealand. She plays a key part in the local Filipino community and recently commented that she was forwarding the "Tawa News" (this newsletter) to at least 92 email addresses in the Tawa Filipino community.

The Tawa Filipino choir sings at various community events, mostly recently at the "Quake Concert" in March. Representatives of the Filipino community also took part in last year's Tawa Christmas Parade. They are one of the many groups active in the life of Tawa, thanks in no small part to the lead taken by Judy Bocacao who also happens to be a scientist with ESR.

You can read a whole lot more about Judy and other interesting Tawa people at: [http://www.tawalink.com/tawa\\_people.html](http://www.tawalink.com/tawa_people.html)

# TAWA COMMUNITY BOARD UPDATE

## RECENT TAWA COMMUNITY BOARD MEETING

At last week's monthly community board meeting, we heard from the following people:

- **Murray Darroch**, Tawa resident, regarding safety at the railway crossings in Tawa.
- **Ray Lindsay**, president of Tawa Progressive & Ratepayers' Society, expressing concerns about the proposed subdivision near the top of Bing Lucas Drive.
- **John Spence**, Kapiti Mana Police Area Commander, regarding recent criminal activity in Tawa. He also talked about the appointment of Tawa's new community constable (more details earlier on).
- **Claire Middleton**, Tawa College head girl, and **Mitchell Bernard**, last year's head boy to do with the Breakfast Club which is run at Tawa College every Wednesday morning before school.
- **Andrew Mclachlan**, Tawa resident, regarding the idea of setting up a community garden or two in Tawa.
- **David Darroch**, Tawa resident who sits on the Camp Elsdon Board, presenting a half-yearly report on progress at Camp Elsdon.
- **Charles Agate**, WCC traffic engineer, about the shared walkway in Duncan and Findlay Streets, and parking changes in Victory Cres.

The community board agreed to use the remainder of its discretionary fund as follows:

- **bench seat** on the Main Road to be placed between Redwood Village and the BP station
- **bush seat** to be placed on the Redwood Bush track between Achilles Cl & Brasenose Pl
- **defibrillator** to be sited in the central Tawa shopping area
- **t-shirts** for use by Tawa Community Board members at public events
- **wooden shields** as part of the Tawa Primary Schools' Citizenship Awards

Portfolios are being allocated to **Tawa Community Board** members as follows (based on Wellington City Councillors' portfolios):

<b>Malcolm Sparrow</b> , Chair	Community Engagement
<b>Graeme Hansen</b> , Deputy	Transport (Public Transport & Roads)
<b>Cr Ngaire Best</b>	Emergency Management, Three Waters & Waste
<b>Cr Justin Lester</b>	Climate Change, Community Facilities
<b>Margaret Lucas</b>	Built Environment, Finance
<b>Chris Reading</b>	Arts & Culture, Economy/Business
<b>Alistair Sutton</b>	ICT, Natural Environment, Sports & Events
<b>Robert Tredger</b>	Governance, Social

## TAWA PRIMARY SCHOOLS' CITIZENSHIP AWARDS

You may already be aware that the community board has recently instituted a citizenship award which will be presented at the end of each year to the year 6 or year 8 student who has shown "true leadership, citizenship, and contribution to school life" in each of Tawa's six primary schools, plus the Intermediate.

Malcolm Sparrow from the community board is in the process of "doing the rounds" of the various primary schools in Tawa telling the year 5 & 6 pupils (or year 7 & 8 where applicable) what the award is all about, and encouraging them to strive to attain it!



A presentation ceremony involving winners from all the schools will take place at the Tawa Community Centre late November. The Mayor of Wellington will present the awards.

## TAWA SHARED WALKWAY

Negotiations between the Wellington City Council and Kiwi Rail have taken place over the last month and the project for the pathway between the Redwood Railway Station and Tawa Railway Station now has the green light.

The work will include a 1.5 m fence that will form a barrier between the rail track and the new 3-metre wide concrete walking cycleway. All this work will commence shortly and should be completed by the end of August.

Design has also started on the new railway walkway that will allow pedestrians to walk/cycle over the railway line by the Tawa Pool directly opposite Tawa College. The construction phase for this part of the walkway should start in early 2012.

With all these improvements, this should make walking and cycling around Tawa that much quicker and easier.

- Brett Gillies, Chairperson of Tawa Shared Walkway committee

## CELEBRITIES IN TOWN

The Rotary Club of Tawa meets every week. On most occasions there's a guest speaker of some sort or another. This month the club has been honoured to have been addressed by the Prime Minister, John Key, two weeks ago, and the All Blacks coach, Graham Henry, last evening (Tuesday). Both guest speakers gave their audiences of 100+ an interesting address before inviting questions.

Graham Henry has a dry sense of humour and a fairly relaxed manner, but stressed how much it will mean to see the All Blacks win the World Cup this year. Their current ranking is number one, but that doesn't really mean a thing. Come September/October it's make or break!

The photo shows Graham Henry with Ayman Ali, Year 13, from Tawa College's first XV, one of many guests there on the night.



## MY NAME IS SCAMPER AND I HAVE RETURNED HOME!!!

I am a 3-year-old neutered male tabby, short-haired cat. In the last newsletter you may have read that I had gone missing from my owner in Redwood Village. I had indeed. I went AWOL for more than a week, and I'm not telling you what I got up to!

I've since learned that my owner was very upset when I took off. She's now ever so pleased that I came to my senses and have returned to the comforts of a good home and ready-made meals. So in case you're still looking out for me, search no more. I was lost but now I'm found. Meow.

## WHAT DO YOU CALL SOMEONE WHO LIVES IN TAWA?

In the last newsletter we asked what someone who lives in Tawa should be called.

Terms that have been used over time are Tawaite (as in Tawa-ite), Tawinian, and Tawanese. Of those who responded, 50% went for Tawanese, and 50% for a name that's apparently been around for a while, but unknown to some of us. That's Tawaiian (as in Hawaiian). That means one vote each for those two.

Adios

### Malcolm Sparrow

On behalf of TawaLink.com

(loosely under the umbrella of the Tawa Progressive & Ratepayers' Association)

info@tawalink.com www.tawalink.com

232 5030 A/H or 027 232 2320

P.S. No point in reading this little warble if you're not a dog lover. If you are, you'll probably know where I'm coming from. Otherwise it may well be meaningless.

A long time ago I remember reading or hearing that the worst thing about owning a dog is that they die. And mine just did. Unfortunately she didn't die in her sleep. I had to make that awful decision to have her put down - less than 48 hours ago. We'd known for some time that that fateful day was drawing closer, but that didn't make it any easier when it did arrive.

We got Kelly when she was just a few weeks old and she lived with us for almost 14½ years (basically ever since we've been in Tawa), a long time for a Labrador X. And as I work mostly from home, she has been with me as a constant companion all those years. It goes without saying that I will miss her - immensely.

Up until the last year or two when she really did start showing her age, she used to love walks (our longest was from Wellington railway station via Wadestown, along the back roads and out to Tawa), chasing cats, retrieving the tennis ball up at the park, swimming in the river or the sea, food (what Lab doesn't?), and she never tired of human company. I was really quite fond of her.

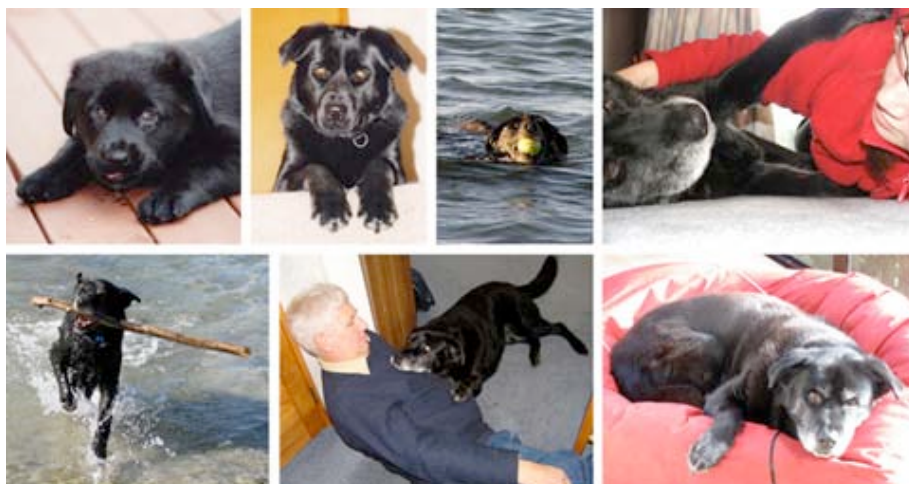
I'll finish with a quote I read a while back. It is rather applicable:

*"She is your friend, your partner, your defender, your dog.*

*You are her life, her love, her leader. She will be yours, faithful and true, to the last beat of her heart.*

*You owe it to her to be worthy of such devotion."*

Farewell Kelly 12.1.1997 - 13.6.2011



*"The reason a dog has so many friends is that it wags its tail instead of its tongue."*

*"If you have a dog, you will most likely outlive it; to get a dog is to open yourself to profound joy and, prospectively, to equally profound sadness." - Marjorie Garber*

*"Of all the animals, surely the dog is the only one that really shares our life, helps in our work, and has a place in our recreation. It is the only one that becomes so fond of us that sometimes it cannot go on living after its master dies." - Ferdinand Mercy*

*"Labradors [are] lousy watchdogs. They usually bark when there is a stranger about, but it is an expression of unmitigated joy at the chance to meet somebody new, not a warning." - Norman Strung*

*"Whoever said you can't buy happiness forgot little puppies." - Gene Hill*

*This community newsletter is emailed to more than 1000 Tawa households, businesses, schools, churches and clubs/groups (anyone who has an interest in the community of Tawa) on the first and third Wednesdays of each month, or thereabouts. If there's anything you'd like to include in the next newsletter, please let us know. If you do not wish to receive the newsletter, please send us an email requesting that your name be deleted from our list.*